



BRICKING SOLUTIONS
A DIVISION OF **BROKK**®

ASSEMBLY INSTRUCTIONS

CUSTOM KILN ACCESS RAMP

LEHIGH PORTLAND CEMENT UNION BRIDGE, MD



NOSE PIECE

BRIDGE SECTION

PEDISTAL

LEAD UP



SAFETY REQUIREMENTS

- ◆ *THE PEDESTAL MUST BE SECURELY BOLTED TO THE BURN FLOOR.*
- ◆ *THE LEAD UP AND BRIDGE SECTIONS MUST BE SECURELY BOLTED TO THE PEDESTAL AND TO EACH OTHER.*
- ◆ *THE NOSE PIECE MUST REST UNIFORMLY ON NEW KILN REFRACTORY LINING OR SECURE BLOCKING OF THE SAME THICKNESS AS THE LINING.*
- ◆ *THE SIDE HAND RAILS MUST BE IN PLACE AND SECURE BEFORE ALLOWING PERSONNEL OR MACHINES TO CROSS THE RAMP.*
- ◆ *INSPECT THE RAMP BEFORE AND AFTER EACH USE FOR DEFORMATIONS AND DAMAGED OR CRACKED WELDS*
- ◆ *FOOT TRAFFIC AND VEHICULAR TRAFFIC SHOULD NOT USE THE RAMP AT THE SAME TIME*
- ◆ *STORE ALL COMPONENTS OF THE RAMP TOGETHER IN A PLACE THAT WILL BE PROTECTED FROM TRAFFIC COLLISIONS AND DAMAGE FROM DROPPED OBJECTS FALLING OR HEAVY OBJECTS BEING PLACED ON TOP.*
- ◆ *WHEN USING THE BROKK TEAR-OUT MACHINE ON THE BRIDGE SECTION A WOOD MATTING OR TIMBER MUST BE USED ON THE BRIDGE SECTION TO SPREAD THE OUTRIGGERS CONCENTRATED LOADS ACROSS THE SURFACE OF THE BRIDGE SECTION.*
- ◆ *NO DEMOLITION EQUIPMENT SHOULD BE OPERATED FROM THE LEAD UP OR NOSE PIECE SECTIONS.*

SETTING UP THE RAMP

STEP 1: Set the PEDISTAL in place and bolt it to the burn floor. (Figure 1)

STEP 2: Use the Fork Truck holders to carry and set the BRIDGE SECTION across the cooler span, resting on the PEDISTAL and just inside the Kiln lip (Figure 2) HAND RAILS need not be pre-installed for this step (See step 5)

STEP 3: Loosely bolt the BRIDGE SECTION to the PEDISTAL using two 5/8 x 2" GRADE 5 bolts (included) (Figure 3)

STEP 4: Set the LEAD UP on the PEDISTAL and against the BRIDGE SECTION and bolt all three pieces together using four more 5/8 x 2" GRADE 5 bolts (included) (Figure 4 & 5)

ONCE ALL SIX BOLTS ARE IN PLACE, BE SURE TO TIGHTEN ALL BOLTS USED TO SECURE THE PEDISTAL TO THE BURN FLOOR AND THE LEAD UP AND BRIDGE SECTIONS TO THE PEDISTAL



FIGURE 1



FIGURE 2

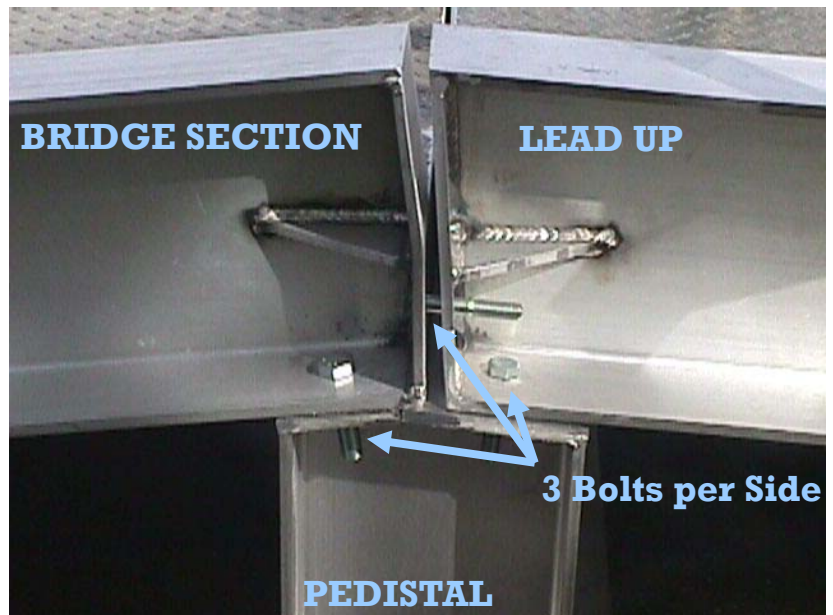


BOLT Here on both sides

FIGURE 3



FIGURE 4



BRIDGE SECTION

LEAD UP

3 Bolts per Side

PEDISTAL

FIGURE 5

STEP 5: If the HAND-RAILS were not installed prior to setting the BRIDGE SECTION across the cooler span, install them now (Figure 6 & 7)



FIGURE 6



FIGURE 7

**Sectional safety Hand-Rails install into holder slots located along the outside of the Bridge Section -
DO NOT ALLOW PERSONELL OR MACHINES TO CROSS THE BRIDGE DECK BEFORE THE SAFETY RHAND RAILS ARE SECURELY IN PLACE**

STEP 6: The NOSE PIECE can now be carried across the BRIDGE SECTION using a fork lift and set in place (Figure 8 & 9)

BE SURE THE NOSE PIECE IS RESTING UNIFORMLY ON NEW REFRACTORY LINING OR IS UNIFORMLY BLOCKED WITH WOOD AND INTERLOCKING 2 INCH CHANNELS ARE FULLY ENGAGED BEFORE DRIVING OR WALKING ON THE NOSE PIECE



FIGURE 8



FIGURE 9