



HI-VAC INDUSTRIAL VACUUM SYSTEM

Range of Products

(A) Hi-Vac HV200 / 400 Series

To meet various specific requirements, the full-line manufacturer of stationary, self-propelled, towable and portable vacuum loader as Hi-Vac Series are offered.

- Application in various fields, any difficult-to-access location.
- Powerful suction, stable performance, heavy-duty.
- Monitoring and protecting by PLC when the equipment operated.
- Ideal design of pipe system for accomplishing the integrated works of cleaning and conveying.

Performance Data: (The conveying capacity below is based on 800 - 1749 kg/cu.m of material density.)

Power	: 7.46 - 238 kw
Maximum Pressure	: 61.2 - 74.8 kPa
Air Volume	: 356 - 9685 m ³ /h
Conveying Capacity	: 3.5 - 100 T/h
Conveying Distance	: 15.2 - 457 m
Material Diameter	: dust - 100 mm
Discharge Standard	: 50 mg/m ³

Compared with HV200, HV400 Series have larger filtration areas so that it can be used for conveying a great amount of particles, dust and fines.



HI-VAC INDUSTRIAL VACUUM SYSTEM



The half-mobile models are carried by forklift to move anywhere in plant, within manifold pipe system they realized the multiple use by a single machine.



A Hi-Vac adopting safe operation platform with ground bolts can be permanently installed as part of a central vacuum system at the plant. The materials collected can be discharged downward and taken away by trucks, conveyor and other transportation means, or discharged to storehouse by blower directly. Cooperated with designed pipe system, the HV Stationary Series performed well in any confined areas, equipment and buildings.



The powerhead mounted onto the self-propelled trailer, are towed by other trucks to anywhere, some difficult-to-access locations in plant, and realized the multiple uses by a single machine.



Portable Hand truck with manual hydraulic lift tows powerhead/hopper assembly and removes hopper for dumping. Full hoppers are removed by forklift and carried to the dump site.



HI-VAC INDUSTRIAL VACUUM SYSTEM

(B) Hi-Vac HV800 Series Wet / Dry Conveying

Filtration System:

The HV800 Series is designed for both wet and dry vacuum conveying with two stages of material separation. It can easily handle free liquids without harming or bypassing its cartridge filter and like all Hi-Vac, the HV800 Series requires no changeover from wet to dry mode. These industrial vacuum cleaners are an excellent choice for light, stringy or fibrous materials. Cartridge dust collector, continuous cleaning, +99% efficiency.

Performance Data: (The conveying capacity below is based on 800 - 1749 kg/cu.m of material density.)

Power	: 15 - 56 kw
Maximum Pressure	: 61.2 kPa
Air Volume	: 594 - 3060 m ³ /h
Conveying Capacity	: 3.5 - 100 T/h
Conveying Distance	: 15.2 - 457 m
Material Diameter	: dust - 50 mm
Discharge Standard	: 50 mg/m ³

To meet various specific requirements, the full-line manufacturer of stationary, self-propelled, towable and portable vacuum loader as HV800 Series are offered.





HI-VAC INDUSTRIAL VACUUM SYSTEM

Vacuum Pump & Motor:

- Positive displacement vacuum pump capable of producing a vacuum of 16" HG (0.542 BAR) at atmospheric pressure at sea level.
- TEFC electric motor, 460 V / 3 PH / 60 HZ, 1750 RPM, 1.15 service factor. (Optional engines available).
- Direct drive with flex coupler and/or "V" belt drive.
- The vacuum pump is a positive displacement type so the motor load increases (pump works harder) as resistance in the vacuum hose increases, rather than decreasing as do turbine or fan type systems.

Automatic Protection:

- Vacuum gauge for monitoring the system vacuum.
- Vacuum gauge and high vacuum 16" Hg (0.542 Bar) relief valve.
- Dirty filter bag detection and automatic shutdown.
- Hopper full level control with automatic shutdown and "Hopper Full" pilot light.

Wet and dry vacuum conveying with two stages of material separation:

- Primary abrasion resistant, radial flow inlet.
- Cartridge dust collector, continuous cleaning, +99% efficiency.
- Exhauster silencer for discharge.
- Without harming or bypassing its cartridge filter; no changeover from wet to dry mode.
- 0.55 Mp, 0.6 m³/min compressed air needed.
- 3/16" steel construction with gasketed, dished head lid for filter cartridge access.
- Fully shop-assembled and tested.



HI-VAC INDUSTRIAL VACUUM SYSTEM

(C) UltraVac Stationary Vacuum Loaders

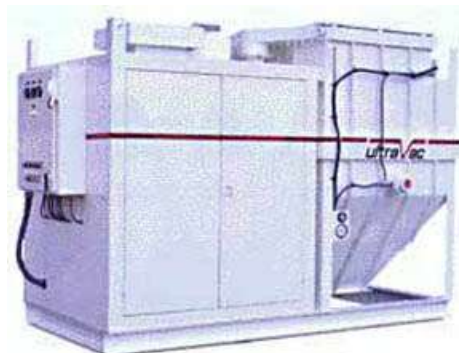
For daily maintenance and recycling material, it is a quick and cost-effective way of collecting and conveying materials to use UltraVac Stationary Vacuum Loader instead of manpower cleaning. UltraVac will clean up aggregates powders, liquids and slurries, any material that will flow through a hose. It cleans out deep pits, dust collectors, catwalks, holds, conveyors, ducts, elevators, and other hard-to-reach areas.

UltraVac can work as part of a plant-wide central vacuum system, cleaning up at multiple locations and rapidly moving materials over long distances. Or it can be used as a pneumatic conveyor to collect and continuously transfer materials into processing systems or storage.

UltraVac features simple structure and flexible operation, and a reverse air bag cleaning system for any of the continuous or intermittent discharge arrangements. Regarding the equipment with heavy power, the filtration system and vacuum pump should be installed separately to avoid influencing the discharge of material at single location. Therefore, the designs above are suitable for conveying and cleaning of various materials in a large scale.

There's an UltraVac with the air flow and capacity to meet your exact needs:

Hopper Capacity	: 1 - 10 cubic yards (0.76 to 7.6 m ³)
Power	: 20 - 300 HP
Hose Diameter	: 2" - 10"
Air Volume at Max. Load	: 400 - 6500 CFM (11.3 - 178 m ³ /min.).





HI-VAC INDUSTRIAL VACUUM SYSTEM

(D) UltraVac Vacuum Trucks

UltraVac advanced-design mobile industrial vacuum loaders are engineered to help you reduce manpower costs and increase productivity. A selection of seven models lets you choose a loader to meet your exact requirements. Models 105 and 115 give you a choice of 50 HP diesel, gas or LP engines. The economical Model 125 requires even less maintenance with a virtually trouble-free 50 HP electric motor. UltraVac also manufactures 75 HP mobile vacuum loading systems, such as UV T-475, T-3000, T-5000 and T-6500. They are highly maneuverable, industrial vacuum loaders with a mid-range power supply and load capacity. Not only can they clean up and convey various materials as usual, but also cope with accidents of spillover or leakiness, especially, some urgent missions with great conveying amounts and time limited.

Performance Data: (The conveying capacity below is based on 800 - 1749 kg/cu.m of material density.)

Power	: 50 - 300 HP (37.5 - 238 kw)
Maximum Pressure	: 51 kPa
Air Volume	: 2413 - 12659 m ³ /h
Conveying Capacity	: 13.6 - 81.63 T/h
Conveying Distance	: 91.4 - 304.8 m
Material Diameter	: < 100 mm
Hopper Volume	: 0.8 - 13.8 m ³
Blower Drive	: separate-engine drive or PTO drive
Discharge Standard	: 50 mg/m ³

Additionally, to meet your specific requirements you can choose certain optional parts for enhancing the productivity. For example, the blowing equipment is added for avoiding secondary pollution to surroundings.

Your choice of separate-engine drive -- 75 HP diesel (Model SE) -- or PTO drive (Model TC) are provided by Hi-Vac corporation. Due to its flexibility, the engine you prefer, Model SE or TC, can be mounted on the truck chassis whatever the customer wanted.



HI-VAC INDUSTRIAL VACUUM SYSTEM

UltraVac T-475



It is a highly maneuverable with a mid-range power supply and load capacity, mounted on the truck chassis. The model will improve the efficiency and cost-effectiveness of industrial material handling and cleanup operations.

Performance Data:

Power	: 75 HP (56 kw)
Maximum Pressure	: 51 kPa
Maximum Air Volume	: 3660 m ³ /h
Maximum Conveying Capacity	: 20 T/h
Hopper Volume	: 3 m ³

UltraVac 105



It is an efficient, heavy duty, dust free self-propelled designed for in-plant use and consists of a power module, material collection hopper, filtration system and propulsion system. It is powered by a 50 HP diesel engine and featured a large 1.0 cu. yd. hopper as standard. An optional 2.0 cu. yd. hopper is also available. However, due to lower chassis, the model should be driven on the flat road.

Performance Data:

Power	: 50 HP (37 kw)
Maximum Pressure	: 51 kPa
Maximum Air Volume	: 2400 m ³ /h
Maximum Conveying Capacity	: 13 T/h
Hopper Volume	: 3 m ³



HI-VAC INDUSTRIAL VACUUM SYSTEM

UltraVac T-3000SE



Performance Data:

Power	: 125 HP (93 kw)
Maximum Pressure	: 51 kPa
Maximum Air Volume	: 5100 m ³ /h
Maximum Conveying Capacity	: 27 T/h
Hopper Volume	: 6.9 m ³

UltraVac T-5000SE



Performance Data:

Power	: 225 HP (167 kw)
Maximum Pressure	: 51 kPa
Maximum Air Volume	: 9700 m ³ /h
Maximum Conveying Capacity	: 46 T/h
Hopper Volume	: 12.2 m ³



HI-VAC INDUSTRIAL VACUUM SYSTEM

(E) Suck / Blow Vacuum Truck

Suck / Blow Vacuum Cleaning Truck, manufactured by Hi-Vac Corporation, is a revolutionary product in the field of conveying materials. The environment-friendly, intelligent product will greatly improve the productivity, working conditions and resource utulance.

Characteristics:

- Utilizes state-of-the art components, integrating sucking equipment and blowing equipment.
- Environment-friendly Collecting, conveying, loading and unloading system.
- Developed monitoring system for operation.
- Powerful, stable performance, heavy-duty.

Performance Data: (VW3600-9 Suck / Blow Vacuum Cleaner Truck)

Sucking material:	Maximum Pressure	: 51 kPa
	Air Volume (Max. Load/No Load)	: 5100 - 5780 m ³ /h
	Sucking Amounts	: 700 Kg/min
	Highest Material Temperature	: 140 °C
	Inlet Diameter	: 168 mm (6")
Blowing material:	Compressed Air Pressure	: 2 Bar
	Maximum Airflow	: 679 M ³ /H
	Blowing Amounts	: 460 Kg/min
	Blowing Height	: 30 m
	Outlet Diameter	: 108 mm (4")
	Tank Volume	: 9m ³



HI-VAC INDUSTRIAL VACUUM SYSTEM

Industrial Serviced Case in Steel Plant:

Requirements in Steel Plant:

- Great amounts of material, from a few to hundreds of tons.
- High specific gravity and corrosive material, including 30%-40% iron, and hard material. It will cause serious abrasion on the wall of pipe and equipment due to high flow rate.
- High temperature, above 100°C at some location.
- Responsibility, the equipment should be operated day and night, once stopped, the loss will be unpredictable.



By vacuum sucking system, the S/B cleaning truck can suck the dusts from the gravity tank of Steel Plant to the collecting hopper mounted on the truck chassis.



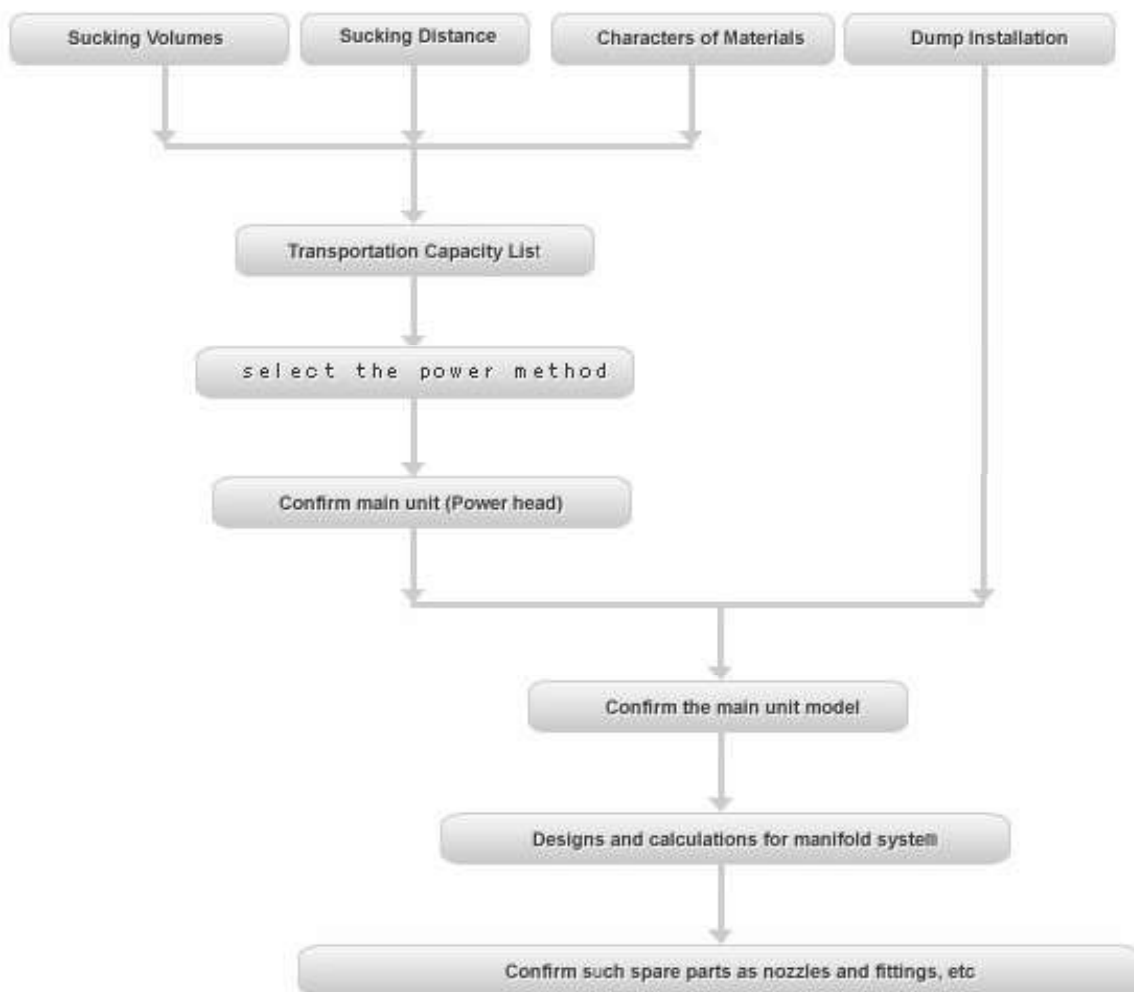
By blowing system, the S/B cleaning truck can blow the dusts directly to the storehouse, 22 meters high above ground. The separator in storehouse efficiently separated materials from air, which can be discharged safely.



HI-VAC INDUSTRIAL VACUUM SYSTEM

Enquiries

The vacuum cleaners and conveyors are used for extensive ranges, but, to use them more effectively, the following procedure are strongly suggested:





HI-VAC INDUSTRIAL VACUUM SYSTEM

The following data is required:

1.	Application	Cleaning / Transportation
2.	Material Descriptions	
3.	Material Sample	Yes / No
4.	Material Size (maximum)	
5.	Material Density	
6.	Material Temperature	
7.	Material Fineness	
8.	Material Characteristics	Toxic / Corrosive / Abrasive
9.	Material Moisture	
10.	Suction Rate Needed	
11.	Distance - Vertical	
12.	Distance - Horizontal	
13.	Distance - Actual	
14.	Factory Power Supply	