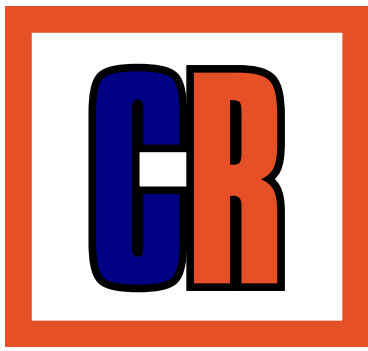


REFRACTORY ENGINEERING

# COMPANY PROFILE





REFRACTORY ENGINEERING

# ABOUT

## CEMAX REFRASTECHNIK MALAYSIA

Cemax Refratechnik Malaysia is a strategic collaboration between Cemax Engineering Sdn Bhd (Malaysia) and Refratechnik Asia Limited (Germany).

We focus on providing innovative refractory solutions to various thermal industries as refractory materials play a critical role in maintaining equipment durability and process optimization in high-temperature environment.

Our range of solutions include:

- Veneering Technology
- Brick and Monolithic Installation
- Hot Kiln Alignment Service
- Refractory Materials
- Refractory Anchor
- Equipment and Tools of Refractory Installation

We serve the customer sectors of:

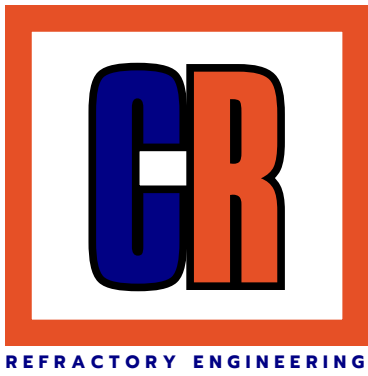
- Iron and Steel
- Cement and Lime
- Energy
- Petrochemical and Chemicals
- Glass
- Non-Ferrous Metals
- Other Refinery Boilers



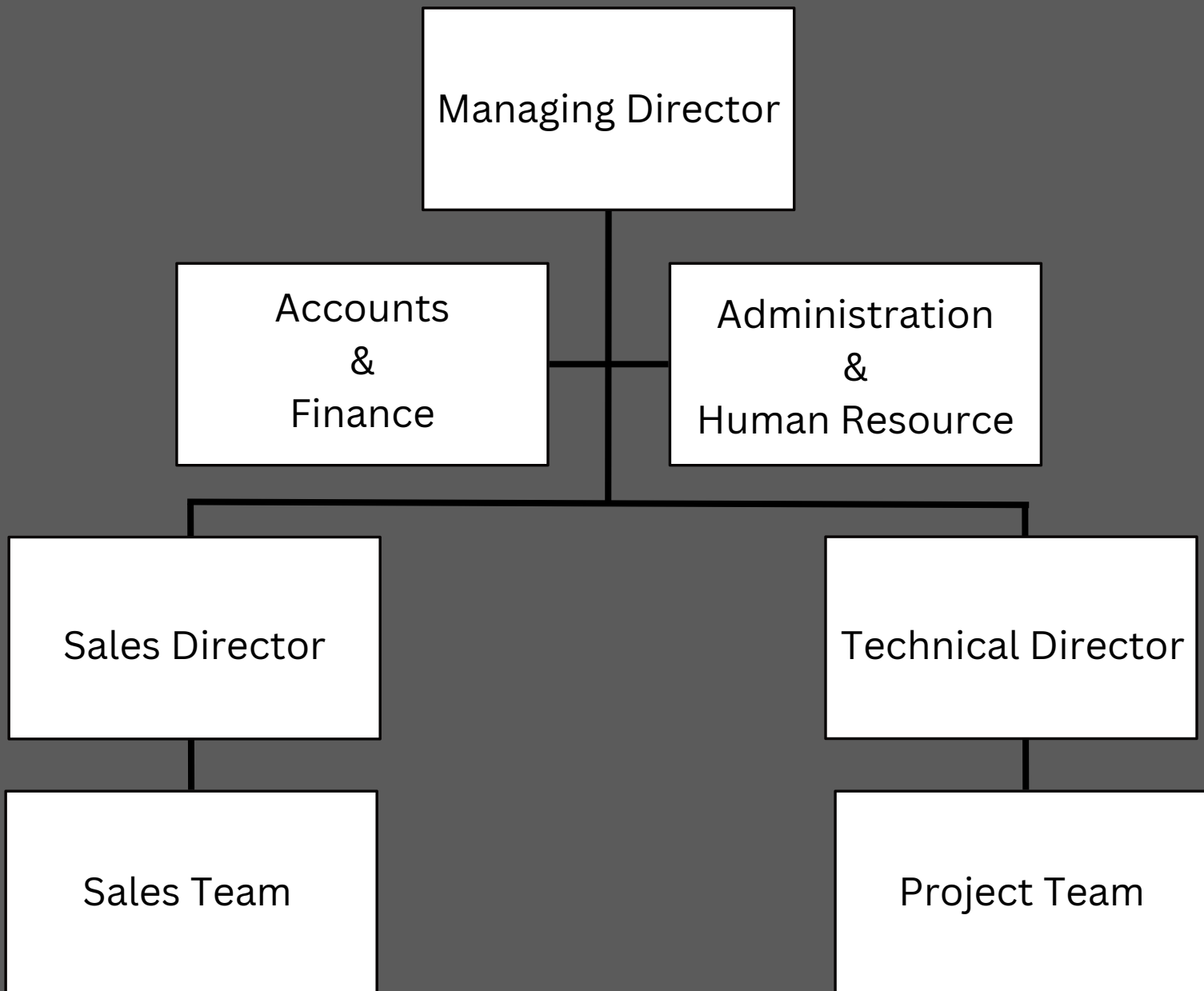


# COMPANY DETAILS

Name of Company	CEMAX Engineering Sdn Bhd
Registration Number	671251-H
Date of Incorporation	2004
Headquarter Address	B-1-15, Jalan PJU 1A/3, Taipan 2, Ara Damansara, 47301 Petaling Jaya, Selangor, MALAYSIA
Telephone Number	+60.3.7842 8622
Website	<a href="http://www.cemax.com.my">www.cemax.com.my</a>
Email	<a href="mailto:sales@cemax.com.my">sales@cemax.com.my</a>



# MANAGEMENT CHART





# SERVICES

## Veneering Technology

Efficient Refractory Repair for Minimized Downtime





REFRACTORY ENGINEERING

# SERVICES

## Brick Lining

Masonry Work Values Reliability and Experience





# SERVICES

## Gunning and Casting Essential Responsibility and Teamwork





REFRACTORY ENGINEERING

# SERVICES

## Acid Lining







# SERVICES

## Ceramic Fibre Lining

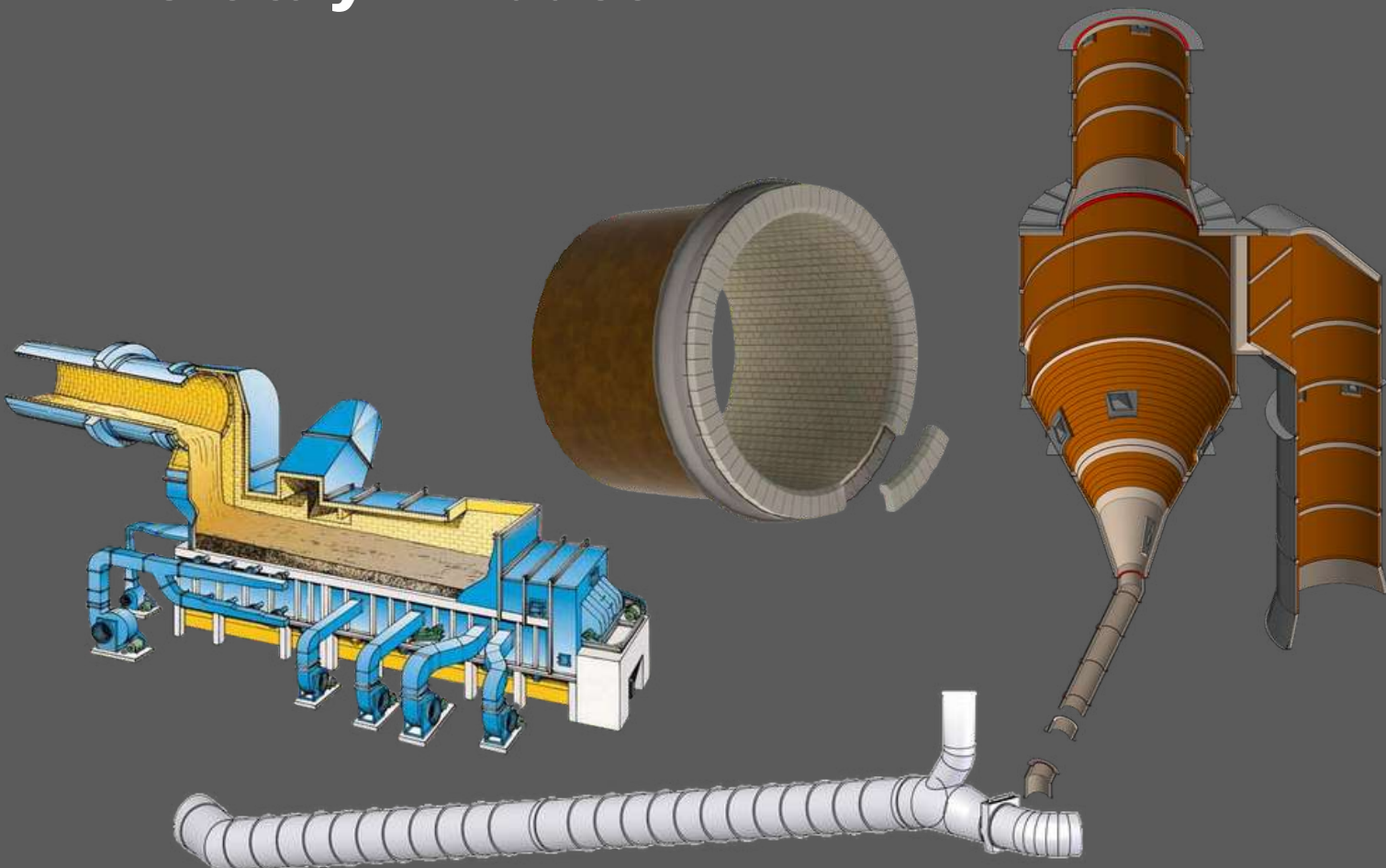




# SERVICES

## Repair of

- Cooler
- Kiln Outlet and Inlet
- Preheater Tower
- Tertiary Air duct





# PRODUCTS

## Brick Materials





# PRODUCTS

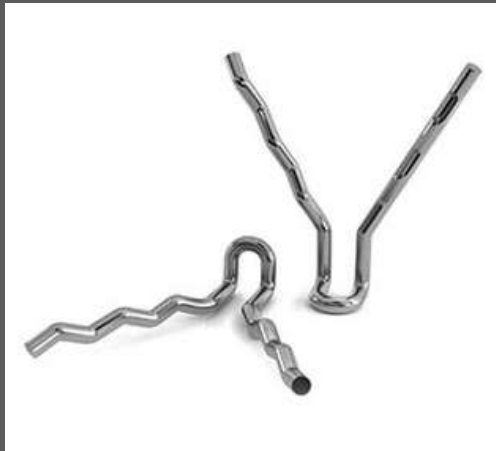
## Monolithic Materials





# PRODUCTS

## Refractory Anchors





# PRODUCTS

## Ceramic Materials





# REFRACTORY RELATED

## Technical Partners



BRICKING MACHINE



DEMOLITION ROBOT



HOT KILN ALIGNMENT



AIR BLASTER



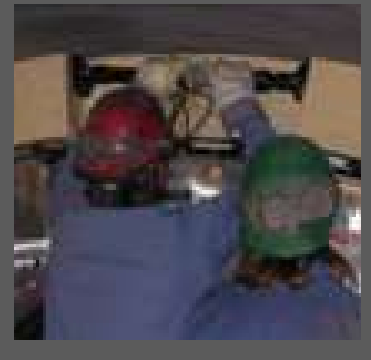
KILN COOLER



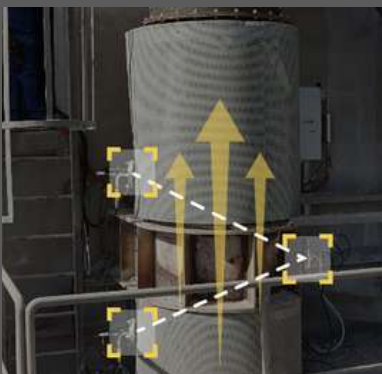
INSPECTION CAGE



SHIM DRIVER



PNEUMATIC JACK



GAS TEMP



COOLER GRATE PLATE





# PAST EXPERIENCES

- CMS Cement – Cooler Castable Repair
- Dialog Group Pengerang – Blasting and Painting
- Keystone Power – Air Blower Refractory Installation
- Lafarge Langkawi – LK2 Damper Fabrication & Installation
- Lafarge Langkawi – TAD Cleaning
- Nestle Malaysia – Castable Repair Work
- Pengerang Johor – Field Blasting and Painting
- Petron Port Dickson – Turn-around Work
- RPCM Chemical – Castable Work
- TigaGajah Cho Seng – Ducting Fabrication and Installation
- YTL Langkawi – Burner Gun Casting
- YTL Perak Hanjoong – Castable Work





# CONTACT



+60 3 7842 8622



[www.cemax.com.my](http://www.cemax.com.my)



[sales@cemax.com.my](mailto:sales@cemax.com.my)



*B-1-15, Block B, Jalan PJU 1A/3, Taipan 2, Ara Damansara,  
47301 Petaling Jaya, Selangor, MALAYSIA*